



SHARON LOUDEN

Windows

September 8 - October 8, 2016
Morgan Lehman Gallery, New York, NY



INDEX

Introduction

Windows

Biography

Credits

INTRODUCTION

Morgan Lehman Gallery is pleased to present an exhibition of drawings and paintings by Sharon Loudon entitled *Windows*. This is the artist's first exhibition of two dimensional works in New York since 2007 and her second exhibition with the gallery.

Sharon Loudon is an artist whose visual vocabulary has always been rooted in drawing and painting, but also includes sculpture, installation, and animation. In this exhibition, Loudon continues her investigation and love of the gesture.

These new works on paper and paintings describe one form repetitively but separate themselves through color and composition of line. Through the specific, awkward placement of these forms, her characters come together to evoke colorful environments of movement and drawing in space.

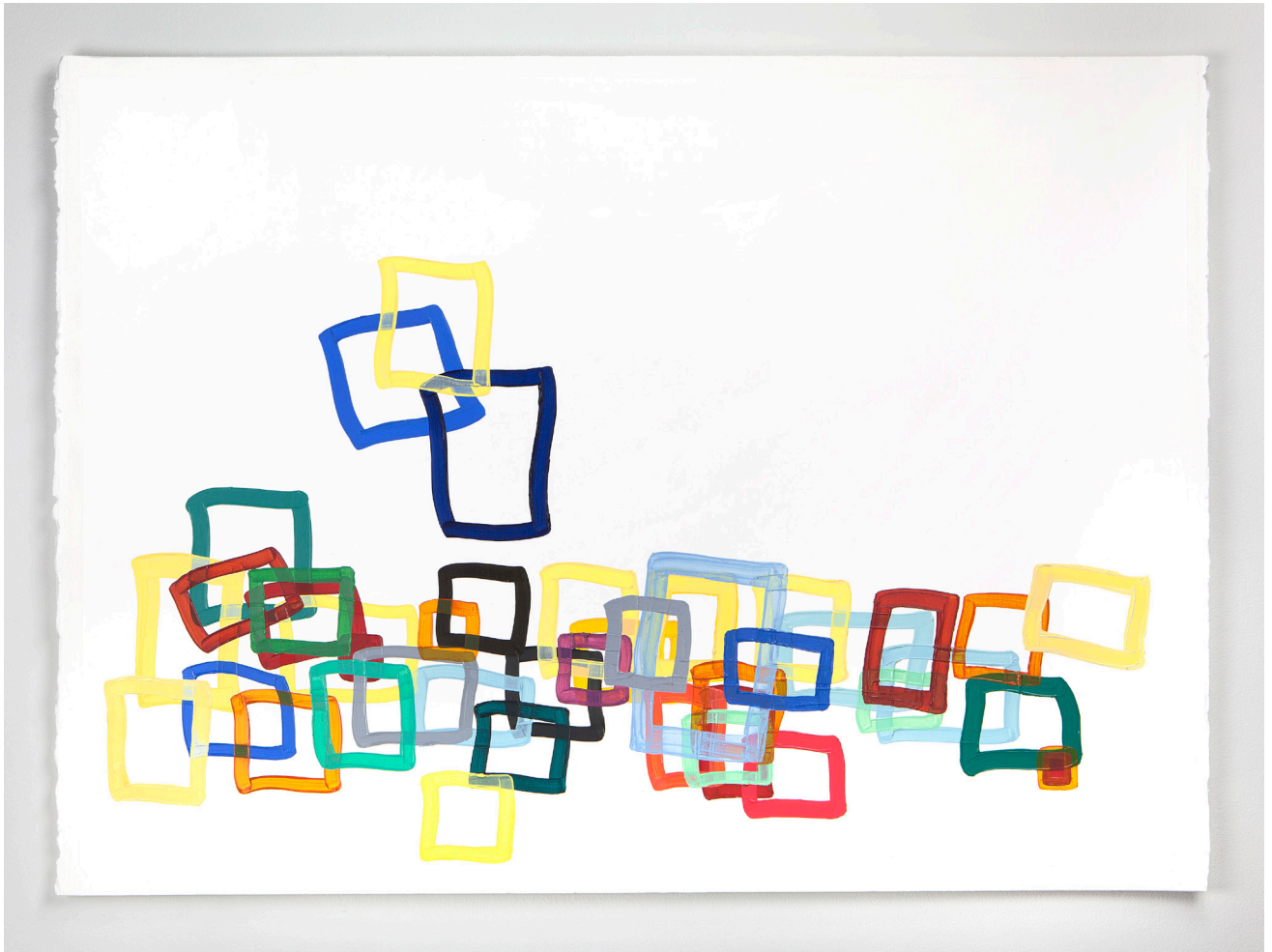
Displayed by magnets floating without frames, these new, free and playful works are beautiful and elegant while simultaneously full of whimsy. Loudon describes them as "happy and joyful."



SHARON LOUDEN | *WINDOWS* | 2016 | OIL ON PAPER
11 1/2 X 12 IN (29.21 X 30.48CM)

SHARON LOUDEN | *WINDOWS* | 2016 | OIL ON PAPER
11 1/2 X 12 IN (29.21 X 30.48CM)

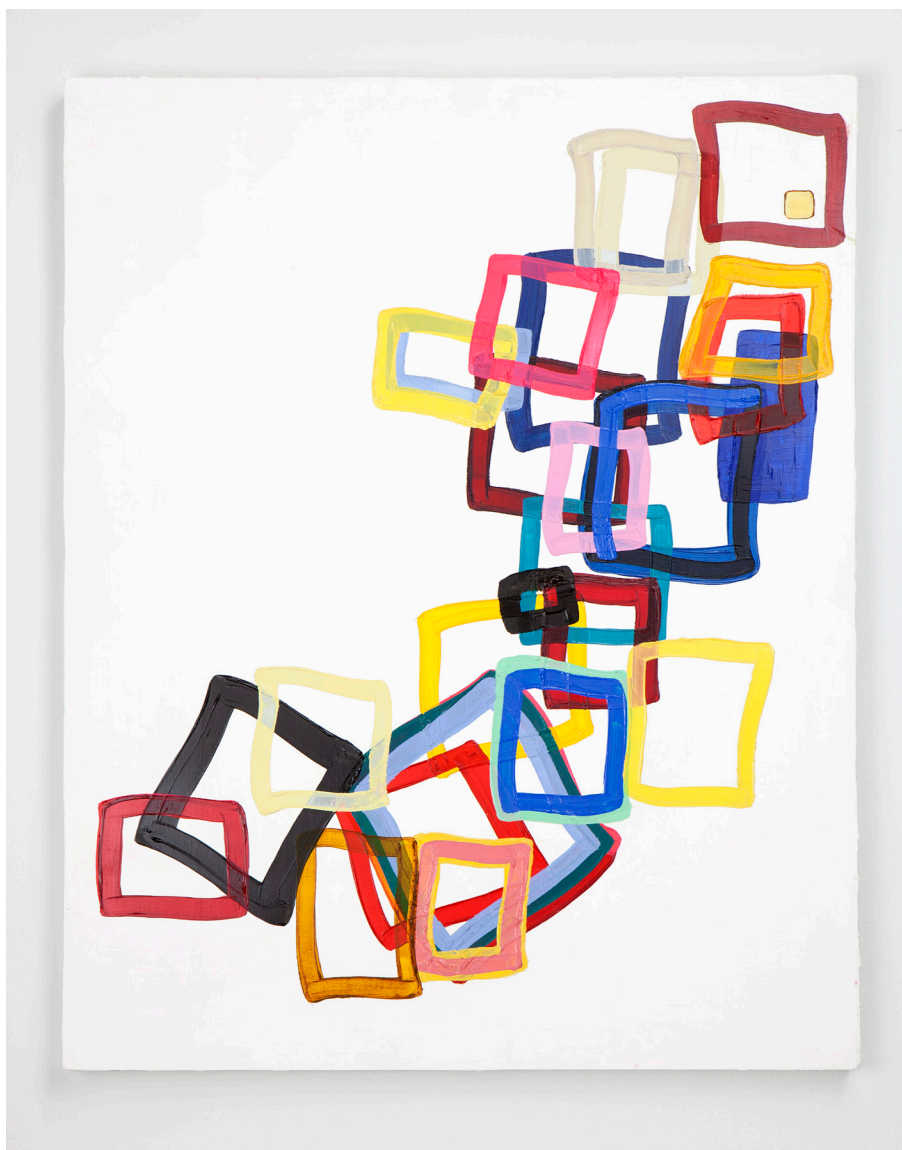




SHARON LOUDEN | *WINDOWS* | 2016 | OIL ON PAPER
22 X 30 IN (55.88 X 76.2 CM)

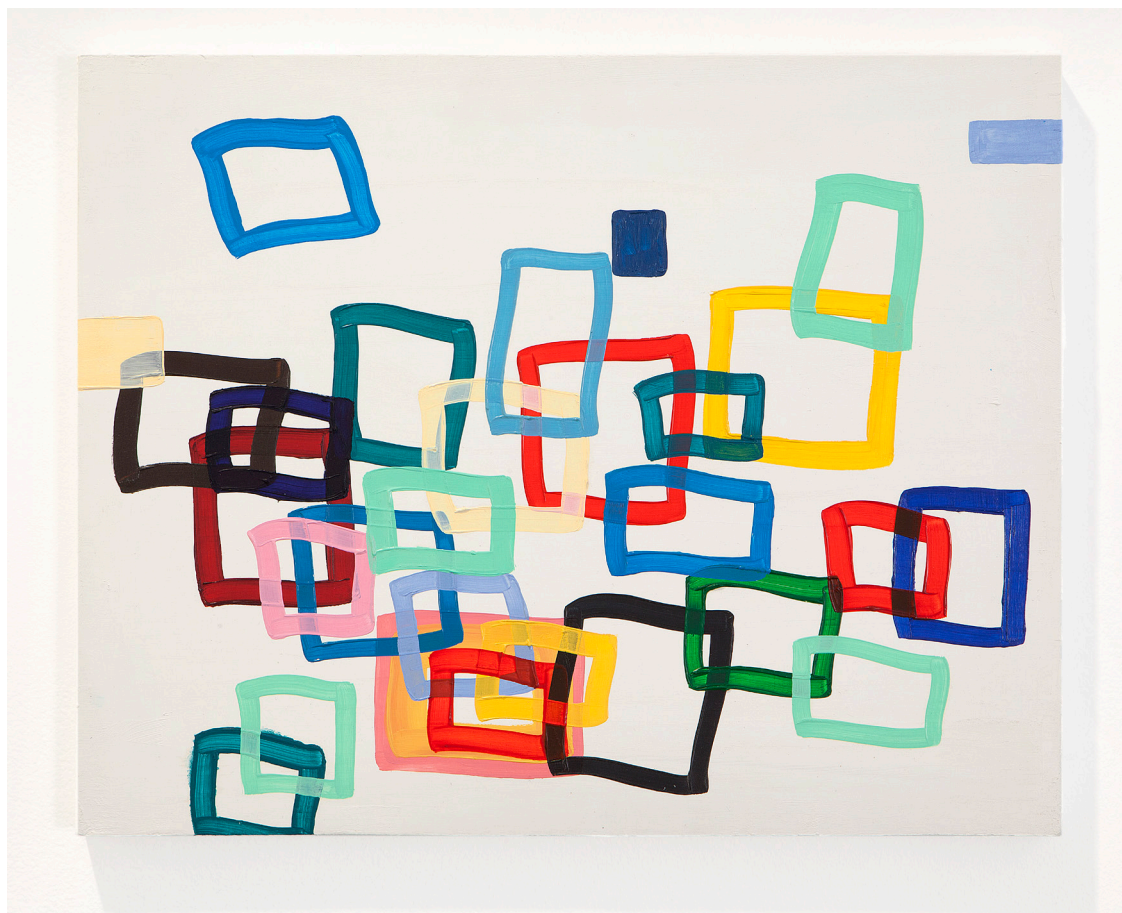
SHARON LOUDEN | *WINDOWS* | 2016 | OIL ON PAPER
8 1/4 X 11 3/4 IN (20.96 X 29.85 CM)

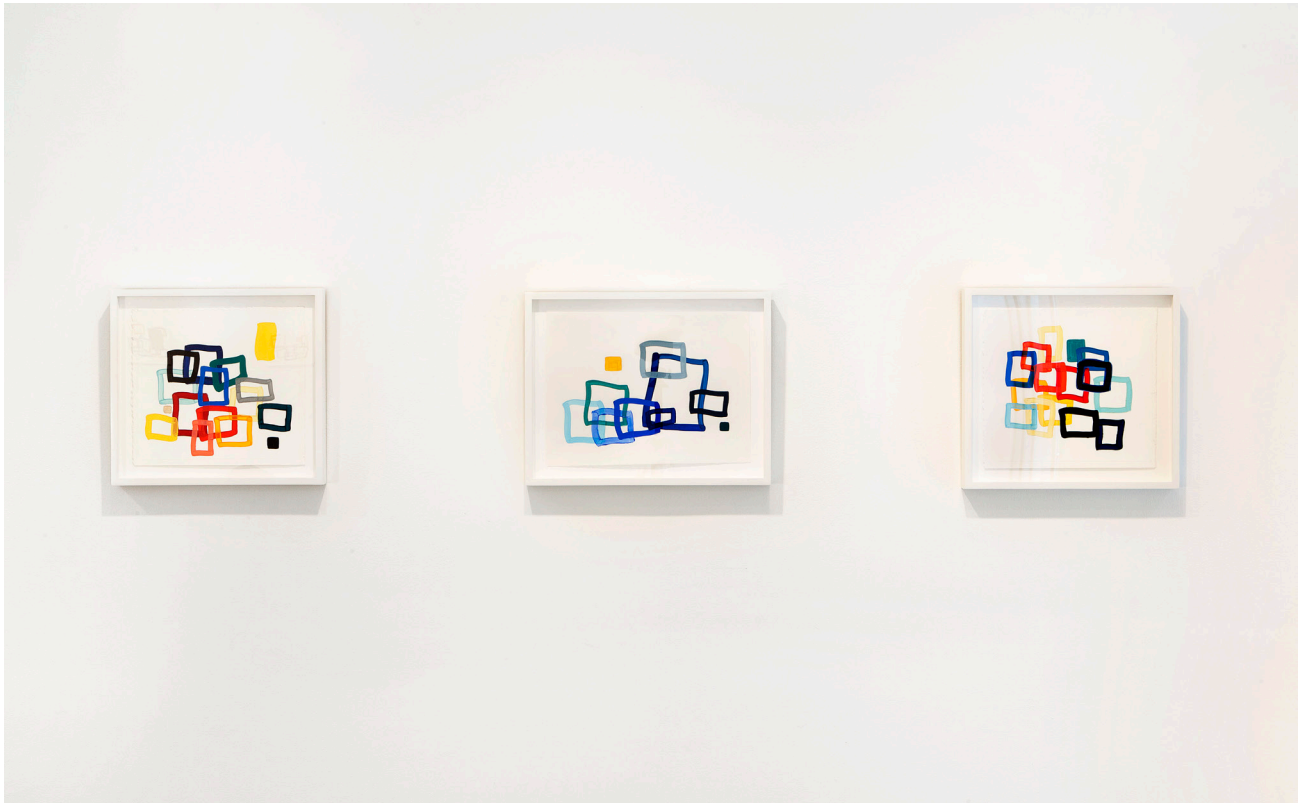




SHARON LOUDEN | *WINDOWS* | 2016 | OIL ON PANEL
20 X 16 IN (50.8 X 40.64 CM)

SHARON LOUDEN | *WINDOWS* | 2016 | OIL ON PANEL
14 X 18 IN (35.56 X 45.72 CM)





BIOGRAPHY

Sharon Loudén was born in Philadelphia, Pennsylvania in 1964. She holds an MFA from Yale University and a BFA from the School of the Art Institute of Chicago.

Her work has been exhibited in numerous venues including the Aldrich Contemporary Art Museum, the Drawing Center, Carnegie Mellon University, Weisman Art Museum, National Gallery of Art, Birmingham Museum of Art, Weatherspoon Art Museum and the Kemper Museum of Contemporary Art.

Louden's work is held in major public and private collections including the Whitney Museum of American Art, National Gallery of Art, Neuberger Museum of Art, Arkansas Arts Center, Yale University Art Gallery, Weatherspoon Art Museum, and the Museum of Fine Arts, Houston, among others.

Her work has also been written about in the New York Times, Art in America, Washington Post, Sculpture Magazine, ARTnews and the Philadelphia Inquirer, as well as other publications.

In addition, Sharon Loudén is a Senior Critic at the New York Academy of Art and the editor of *Living and Sustaining a Creative Life: Essays by 40 Working Artists*. Loudén is currently working on a second book entitled,

The Artist as Culture Producer: Living and Sustaining a Creative Life, which will be published in early 2017 by Intellect Books and distributed by the University of Chicago Press.

Concurrent with this exhibition is Loudén's site specific commissioned installation, also entitled *Windows*, that is featured in a solo exhibition at the Tweed Museum of Art, on view through December 2016.



MORGAN LEHMAN
534 West 24th Street, New York, New York 10011